

PROJECT MANAGEMENT AND COORDINATION

CONCEPT AND ARCHITECTURAL DESIGN

PROJECT ENGINEERING

WORK SUPERVISION



AMAL ENGINEERING S.A. IS A COMPANY THAT PROVIDES INTEGRATED ARCHITECTURE AND ENGINEERING, CONSULTANCY AND TECHNICAL-SPECIALIZED SERVICES AND OPERATES IN MAIN SPECIALISED AREAS. IT WAS ESTABLISHED IN 1996

COMPANY PROFILE

Denomination: AMAL Engineering S.A.

Legal Seat, Administrative and Technical Offices:
Via Ferri 1 – Lugano - Switzerland
Tel.: +41.91.2340616
Fax: +41.91.2348337
e-mail: amal.engineering@gmail.com

Financial Data:
Chamber of Commerce Registration Number:
CHE-103.481.518

General data:
Paid up share capital: CHF 100.000
Year of establishment: 1996

Bank Reference:
EFG Bank S.A. – Lugano Branch

The Company is under certification process for the integrated systems:
Quality: ISO 9001:2000
Environment: ISO 14001:2004
Safety: BS OHSAS 18001:2007

AIM OF THE COMPANY

AMAL, within the innovative service industry and with its entrepreneurial type of organization, develops activities aiming to providing its customers with the entire cycle of multiple-field services with a high level of intellectual, scientific, technical, financial and legal competence as well as interdisciplinary services related to engineering, plants and general infrastructure work.

The complex and interconnected services that are offered include technical planning activities as well as activities related to organization, management and finance, with the purpose of optimizing investments from a technical, operational and financial point of view. Activities extend from the simple consultancy to the final supplying of "turn-key" works and sectors of implementation include all the different fields of financial and social development.

The main features of the company can be summarized as follows:

- Organization capable of handling projects and analysis which are non controllable or manageable by a single professional design consultant in terms of time, size and quality.

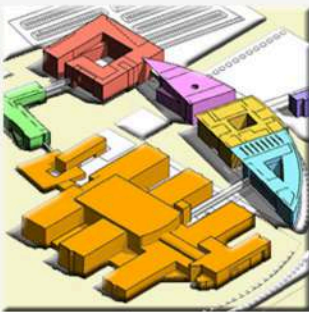
- Activities carried out by pre-formed teams of professionals trained and prepared to perform team work.
- Interdisciplinary characteristics offering a complete service with different types of specializations.

AMAL, operating as middle-company, gives the client a strategic organization and a global answer for the creation of real estate and complex production buildings.

Therefore, the different interventions include the development of the entire economic cycle which has its fulcrum in design and building but also ranges from environmental planning to financial planning; from marketing study to technical and start-up assistance; from the creation of supporting infrastructures to staff training.

Therefore, AMAL is directed towards customers with several different objectives: financial, infrastructural, industrial, tertiary, business, public and scientific; targets which require the following activities: organization, systematization, design, construction, administration and management.

HEALTHCARE



FIELDS OF INTERVENTION

AMAL works in the field of engineering and technical consulting:

A in the following activities:

- research, consulting, technical and financial feasibility study;
- design, supervision, management and testing for works of any type and size within the following fields:
 - engineering, architecture and town-planning;
 - civil and industrial building;
 - infrastructures;
 - industrial plants;
 - making buildings and plants operational;

B in activities of evaluation technical-financial and environmental compliance;

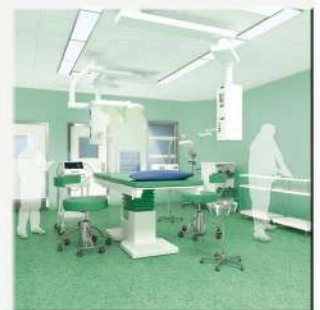
C in supporting activities for public and private administration, including commercializing activities for the realization and, possibly, for the management of the work;

D in running concessions on the behalf of customers concerning the following activities: study and research for setting up programs or for preliminary design; final and working design with related study and research; compulsory purchase; work supervisor election; preliminary investigation for consulting assistance to the owner of the work who is also the granting subject in the contract assignment procedures and in the following relationships with the bidder as well as in further activities which, by law, may be assigned as concessions;

E in taking on concessions for programming and coordinating resources in different fields, in order to carry out projects concerning infrastructures and land development also by managing work assignment to other companies;

F it is active as promoter of temporary associations and companies for the construction and management of buildings and infrastructures.

WELFARE



HOSPITALITY



ARCHITECTURE AND ENGINEERING SERVICES OFFERED

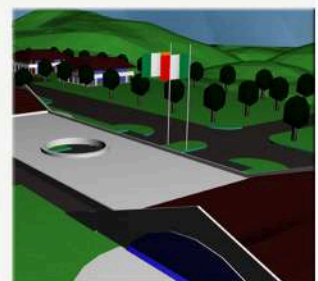
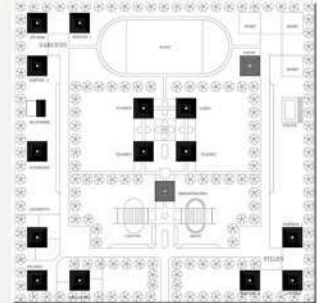
A FIELDS OF OPERATION

- Architectural and engineering design with the integration, within the work team, of all architecture and engineering specialties as: architecture, structural engineering, energy engineering, electrical power plant engineering, air-conditioning and heating, fire prevention, special plant engineering (telephone lines, data transmission, surveillance, etc...)
- Project management and coordination, turn-key design, concept and architectural design, interior design, project engineering, work supervision, site management and coordination for the turn-key realization and for the start-up of: buildings of any type and for any use, as well as buildings with any type of static or architectural feature; any type of plant, infrastructure, as well as infrastructural or building installations; adaptations; organization of furniture and equipment supply (including medical equipment).
- Management of: market research, product selection and purchase assistance.
- Main contractor for turn-key realization and operation start-up for buildings and minor constructions (including personnel qualification training).
- Research and selection of general contractor, main contractor and/or sub-contractor interested in the realization of work to be contracted.

For the realization of:

- Districts, residential areas, public housing;
- Hospitals, general hospitals and health facilities for assistance;
- Buildings and public and/or private facilities;
- Schools;
- Universities, research institutes, scientific research laboratories;
- Installations and sport facilities;
- Restoration;
- Preparation of museums and exhibitions;
- Facilities for specialised and complex industrial production;
- Industrial plants in general;
- Military facilities and safety structures;
- Large transport infrastructures as: railway stations, airport terminals, etc.;
- Road condition, motorways, railway;
- Sewerage system, plumbing system, and water supply;
- Liquid and solid waste treatment and disposal;
- Electrical power generators.

EDUCATIONAL



HOUSING



ARCHITECTURE AND ENGINEERING SERVICES OFFERED

B Range of consultancy activities:

- 1) Organising, planning, strategies.
- 2) Feasibility studies.
- 3) Market research and analysis.
- 4) Evaluation of existing buildings, territories and plants conditions.
- 5) Research and experimentation.
- 6) Technical assistance for development plans.
- 7) Assessment of economical and environmental conditions.
- 8) Creation of town and environmental plans.
- 9) Negotiations with bodies and companies in order to obtain the most advantageous agreements for specific needs.

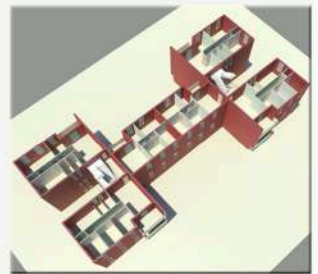
C Due Diligence and Third Party Assessment Activities (technical-environmental, legal and financial consulting for infrastructures).

The activity involves the evaluation of the technical, legal and financial feasibility for the development of real estate buildings through the drafting of a Due Diligence Report made to ensure the substantial feasibility of the operations.

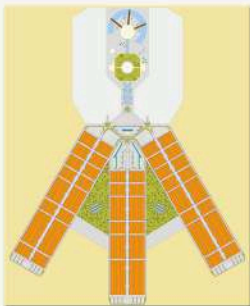
Activities are divided as follows:

- 1) Analysis of administrative, legal, fiscal and technical documentation.
- 2) Inspections and surveys.
- 3) Financial assessments.
- 4) Evaluation of the interventions.
- 5) Detailed reports of the technical, administrative, legal, fiscal and financial analysis.
- 6) Discretion on the general and specific state of the development.
- 7) Listing of problems noticed during the the evaluation.
- 8) Possible solutions to such problems and related effect on the value of the developed project.
- 9) Assistance in the closing of the financing.
- 10) Monitoring during construction work.
- 11) Assistance during temporary and final testing phases.
- 12) Monitoring during work management phase.

HOUSING



INDUSTRIAL PARKS



ARCHITECTURE AND ENGINEERING SERVICES OFFERED

D Activities of validation, carried out together with a person connected with the project, for the design and supervision of public and public service works.

Such activity attains to terms and laws which define the methodology and the efficiency of third party inspection bodies which are regulated, in Italy, according to laws and regulations concerning all activities of verification and validation of projects for public works.

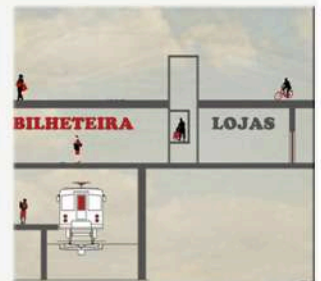
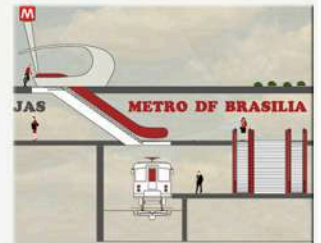
Activities are basically classified as follows:

- 1) General planning of inspection activities.
- 2) Verification of the legitimacy of the pre-contract project documentation.
- 3) Checking: adequacy, efficiency and validity of the documentation; technical and financial deeds and graphic works which make up the project.
- 4) Issuing of an initial report.
- 5) Technical inspection of the documentation according to a logical appropriate project discipline.
- 6) Technical, administrative and financial verification of the intervention.
- 7) Compliance of the project choices with the needs of: use, maintenance and management of the product.
- 8) Assessment of all of the necessary legal approvals and authorizations for an immediate construction site realization for the implementation of the project.
- 9) Issuing, during work, of interim inspection reports with assessment of possible non compliance or determination of their level.
- 10) Final reporting for closing.

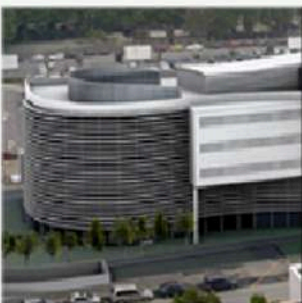
E Activities of technical-administrative tests related to the works carried out by others, with verification and certification purposes:

- 1) If the work was carried out in compliance with the contract and its duly approved variations.
- 2) If the work was carried out according to standards and as pre-set technical specifications.
- 3) If, during work management, the client's interest was safeguarded.
- 4) If accounting operations were carried out and if the final liquidation appointed prices and determined payments were appropriate and settled according to the contract.
- 5) If the performed work has any deficiency that would make it totally/partially unacceptable or if the defects are of small degree and reparable in a short time.

TOWN PLANNING



DUE DILIGENCE



ARCHITECTURE AND ENGINEERING SERVICES OFFERED

After having ascertained the above, all test deeds according to law will be written by drafting the following:

- site inspection process reporting;
- reports on the outcome of every site inspection;
- technical and accounting auditing of the work with eventual assignment of the contractor for: possible damages; any additional expenses following the execution of duties; for any other reason;
- final test certification;
- eventual report upon request of the contractor for additional payments.

F Management of the technical office of bodies and/or companies according to their specific needs by carrying out activities of technical office for new works and/ordinary and/or specific maintenance with eventual requalification of the personnel.

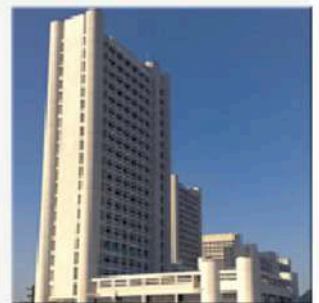
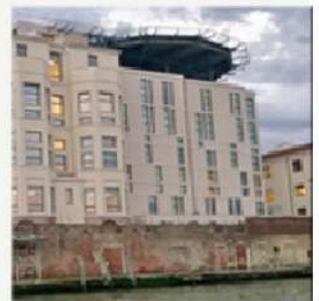
G Finding and eliminating industrial and civil risk as well as activities aiming to the well being and the hygiene and safety of the work place, through testing, certification and compliance of work and plants.

H The countries in which AMAL or its Professional Team worked and is working are:

- Europe: Albania, Germany, Moldova, Macedonia, Romania and Russia
- Middle East: Bahrain, Saudi Arabia, Kazakhstan and Kuwait
- Africa: Cameroon, Congo-Brazzaville, Ivory Coast, Libia, Nigeria, Ghana and Zaire
- America: Brazil and Nicaragua

Therefore, AMAL provides a wide range of services taking care of the entire management of the interventions in the building, industrial, infrastructural sectors up to the complete closing of the project.

DUE DILIGENCE



COMPANY ORGANIZATION CHART

