

CLIENT: ADMINISTRATION DEPARTMENT OF THE COLENTINA HOSPITAL
 PERIOD: 2007

LOCATION: COLENTINA (BUCHAREST) (ROMANIA)

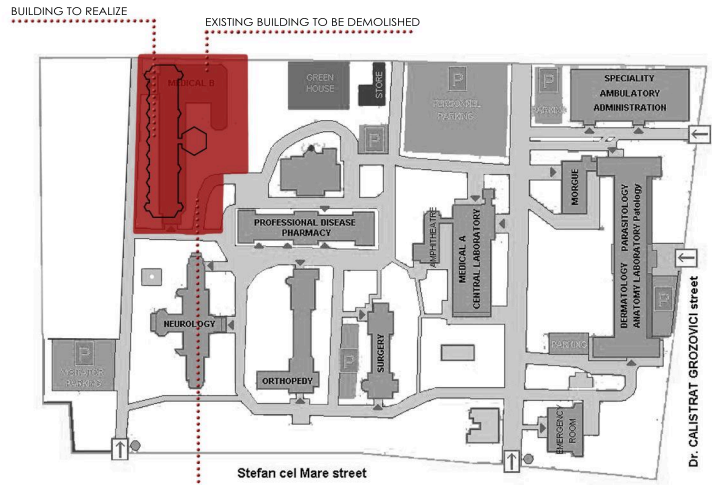
DESCRIPTION: 23.600 m² - 326 BEDS

WORK VALUE: € 62.000.000

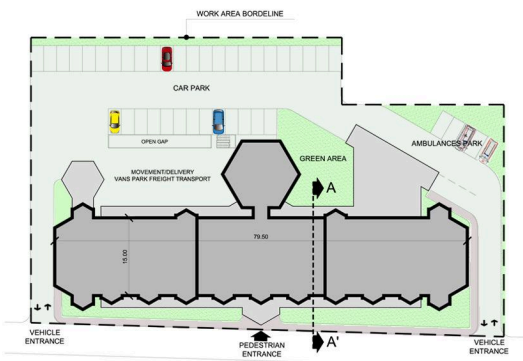
SERVICES PROVIDED: PROJECT MANAGEMENT FOR DESIGN SERVICES FOR PRELIMINARY DESIGN



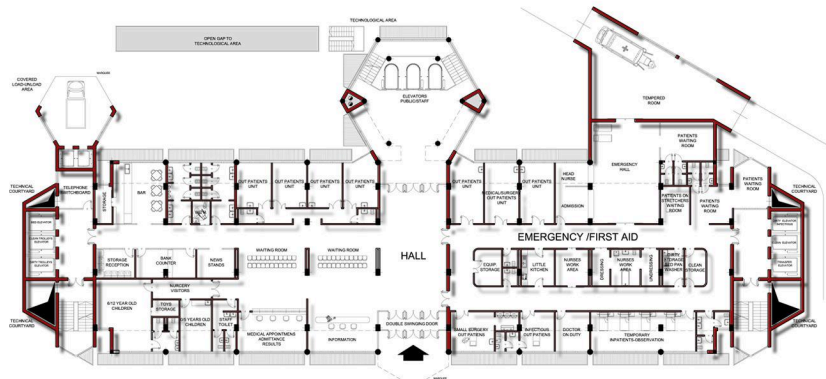
INTERVENTION OBJECT AREA



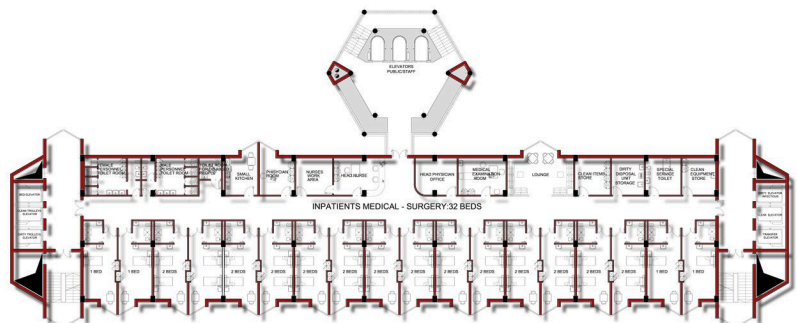
Stefan cel Mare street



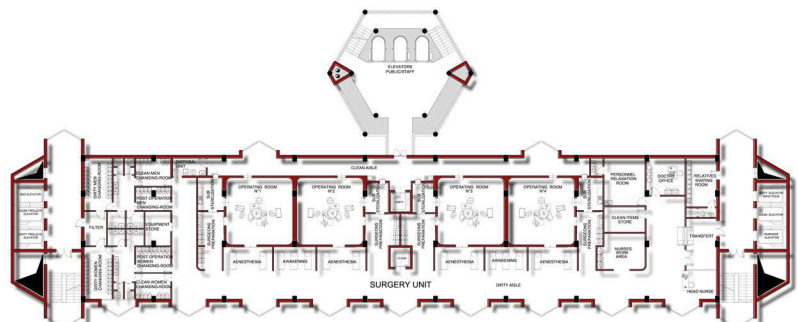
PLAN WITH EXTERNAL WORKS



GROUND FLOOR PLAN



TYPE FLOOR PLAN



OPERATING BLOCK PLAN

FLOOR 15	STERILIZATION	
FLOOR 14	SURGERY UNIT	
FLOOR 13	SURGERY UNIT	
HOSPITAL MANAGEMENT	FLOOR 12	INPATIENTS CARDIOLOGY ANGIO-SURGERY:12 BEDS
	FLOOR 11	INPATIENTS CARDIOLOGY ANGIO-SURGERY:36 BEDS
	FLOOR 10	INPATIENTS MEDICAL NEURO - SURGERY :32 BEDS
	FLOOR 9	INPATIENTS NON TRAUMATOLOGICAL SURGERY ORTHOPAEDICS:32 BEDS
	FLOOR 8	INPATIENTS NON TRAUMATOLOGICAL SURGERY ORTHOPAEDICS:32 BEDS
	FLOOR 7	INPATIENTS NON TRAUMATOLOGICAL SURGERY ORTHOPAEDICS:32 BEDS
	FLOOR 6	INPATIENTS NON TRAUMATOLOGICAL SURGERY ORTHOPAEDICS:32 BEDS
	FLOOR 5	INPATIENTS SURGERY - MEDICAL ONCOLOGY:32 BEDS
	FLOOR 4	INPATIENTS SURGERY - MEDICAL ONCOLOGY:32 BEDS
	FLOOR 3	INPATIENTS SURGERY - MEDICAL ONCOLOGY:32 BEDS
D.H. INPATIENTS ONCOLOGY: 18 BEDS	FLOOR 2	INPATIENTS OPERATING ROOM/INFECTIOUS
	FLOOR 1	RADIOLOGY
EMERGENCY /FIRST AID	GROUND FLOOR	ENTRANCE - HALL
	UNDERGROUND FLOOR	
		FOOD PORTIONING
		SELF SERVICE CANTEN
		DISINFECTION - DISINFESTATION
		STAFF CHANGE ROOMS
		STORAGE
		TECHNOLOGICAL ROOMS

SCHEMATIC SECTION A-A