

CLIENT: MINISTRY OF HEALTH OF THE REPUBLIC OF CONGO-BRAZZAVILLE

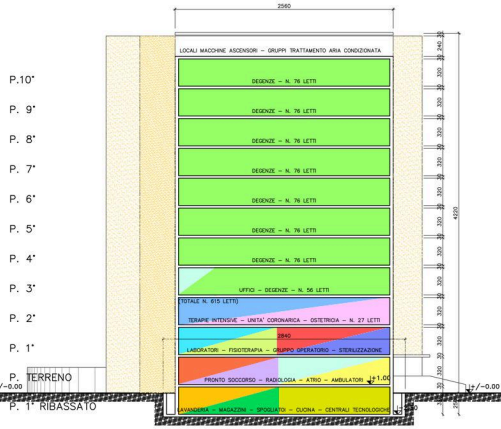
PERIOD: 1998

LOCATION: POINT-NOIRE (CONGO-BRAZZAVILLE)

DESCRIPTION: 43,143 m² - 169,890 m³ - 615 BEDS

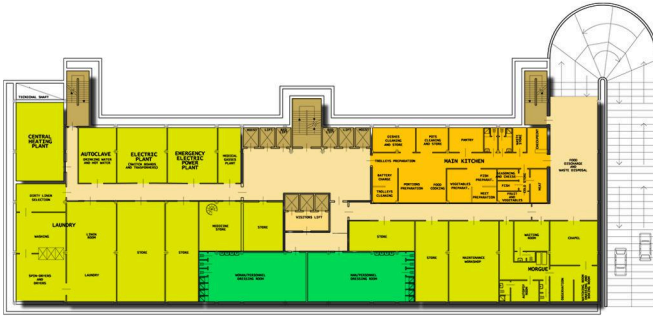
WORK VALUE: \$ 8,450,000

SERVICES PROVIDED: PROJECT MANAGEMENT FOR DESIGN SERVICES FOR FEASIBILITY STUDY

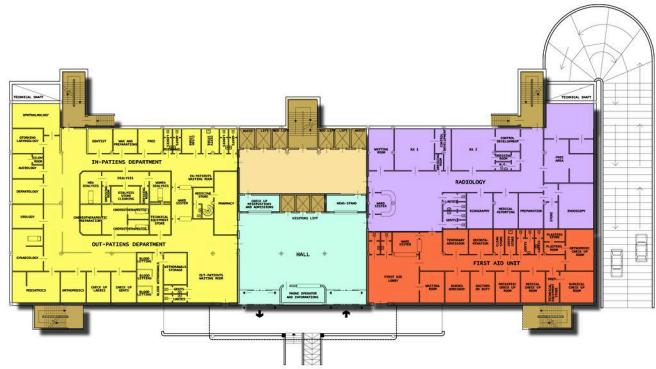


SCHEMATIC SECTION

SUMMARY OF THE BEDS NUMBER		
DEPARTMENT	FLOOR	N. OF BEDS
CORONARIC UNIT AND INTENSIVE CARE UNIT	2 nd	13
OBSTETRIC UNIT	3 rd	14
BED WARD UNIT (rooms with n.2 beds)	4 th	56
BED WARD UNIT (rooms with n.2 beds)	5 th	76
BED WARD UNIT (rooms with n.2 beds)	6 th	76
BED WARD UNIT (rooms with n.2 beds)	7 th	76
BED WARD UNIT (rooms with n.2 beds)	8 th	76
BED WARD UNIT (rooms with n.2 beds)	9 th	76
BED WARD UNIT (rooms with n.2 beds)	10 th	76
TOTAL		615



BASEMENT FLOOR PLAN



GROUND FLOOR PLAN



FIRST FLOOR PLAN



SECOND FLOOR PLAN



THIRD FLOOR PLAN



TYPE FLOOR PLAN

LEGEND

	HALL		OPERATING UNIT		INTENSIVE CARE UNIT - CCU		TECHNICAL SERVICES
	RADIOLOGY/ DIAGNOSTIC RADIOLOGY		CENTRALIZED STERILIZATION		OBSTETRICS - NURSERY		STAFF CHANGE ROOMS
	EMERGENCY DEPARTMENT		PHYSIOTHERAPY		WARDS AND INPATIENT ROOMS		CORRIDORS
	OUTPATIENT CLINIC		LABORATORIES		KITCHEN		STAIRS - ELEVATORS

HEALTHCARE AND WELFARE HOSPITAL "ADOLF SICE": RENOVATION AND ENHANCEMENT OF HOSPITAL WITH 615 BEDS