

CLIENT: MINISTRY OF HEALTH OF THE REPUBLIC OF CONGO-BRAZZAVILLE

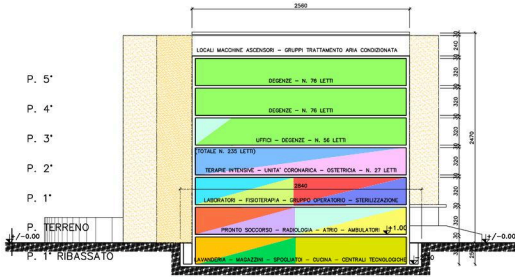
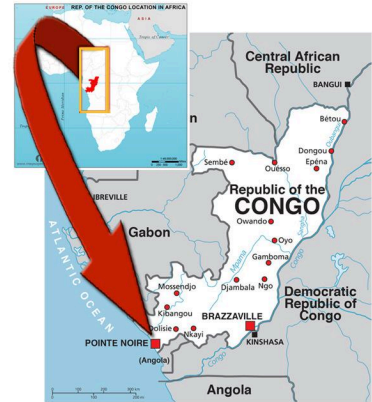
PERIOD: 1998

LOCATION: POINT-NOIRE (CONGO-BRAZZAVILLE)

DESCRIPTION: 19,841 m² - 235 BEDS

WORK VALUE: \$ 4,675,000

SERVICES PROVIDED: PROJECT MANAGEMENT FOR DESIGN SERVICES FOR FEASIBILITY STUDY

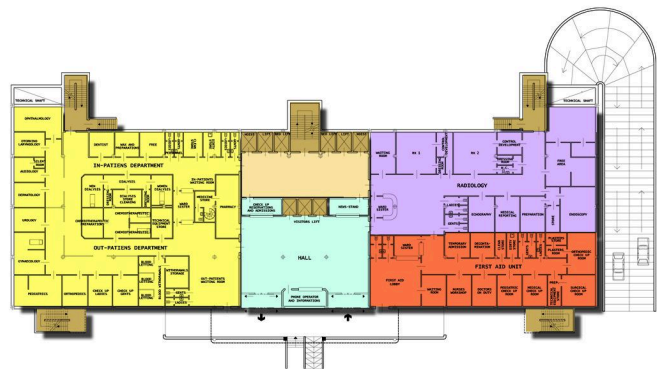


SCHEMATIC SECTION

| SUMMARY OF THE BEDS NUMBER | | |
|--|-----------------|------------|
| DEPARTMENT | FLOOR | N. OF BEDS |
| CORONARIC UNIT AND INTENSIVE CARE UNIT | 2 nd | 13 |
| OBSTETRICS UNIT | 2 nd | 14 |
| BED WARD UNIT (rooms with n.2 beds) | 3 rd | 56 |
| BED WARD UNIT (rooms with n.2 beds) | 4 th | 76 |
| BED WARD UNIT (rooms with n.2 beds) | 5 th | 76 |
| BED WARD UNIT (rooms with n.2 beds) | 6 th | 76 |
| TOTAL | | 311 |



BASEMENT FLOOR PLAN



GROUND FLOOR PLAN



FIRST FLOOR PLAN



SECOND FLOOR PLAN



THIRD FLOOR PLAN



TYPE FLOOR PLAN

LEGEND

| | | | | | | | |
|--|---------------------------------|--|---------------------------|--|---------------------------|--|--------------------|
| | HALL | | OPERATING UNIT | | INTENSIVE CARE UNIT - CCU | | TECHNICAL SERVICES |
| | RADIOLOGY/ DIAGNOSTIC RADIOLOGY | | CENTRALIZED STERILIZATION | | OBSTETRICS - NURSERY | | STAFF CHANGE ROOMS |
| | EMERGENCY DEPARTMENT | | PHYSIOTHERAPY | | WARDS AND INPATIENT ROOMS | | CORRIDORS |
| | OUTPATIENT CLINIC | | LABORATORIES | | KITCHEN | | STAIRS - ELEVATORS |