

CLIENT: CREDIT FONCIER DU CAMEROUN

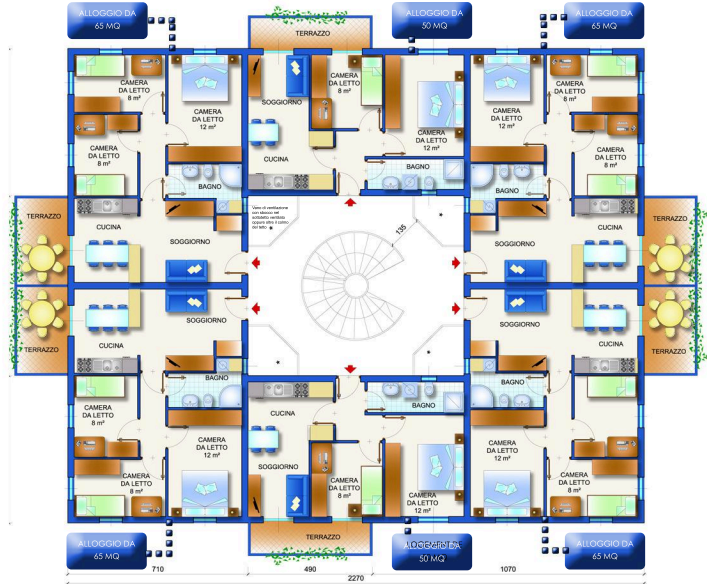
PERIOD: 2010

LOCATION: DOUALA AND YAOUNDÈ (CAMEROON)

DESCRIPTION: 1,150,000 m² EACH, NO. 5,000 APARTMENTS EACH

DESCRIPTION: € 150,400,000 EACH

SERVICES PROVIDED: PROJECT MANAGEMENT FOR DESIGN SERVICES FOR FEASIBILITY STUDY



HOUSING NEW COMPLEXES (2 RESIDENTIAL COMPLEXES WITH 5,000 APARTMENTS EACH) WITH SERVICE INFRASTRUCTURES