

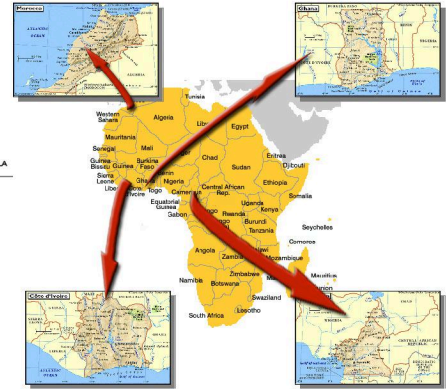
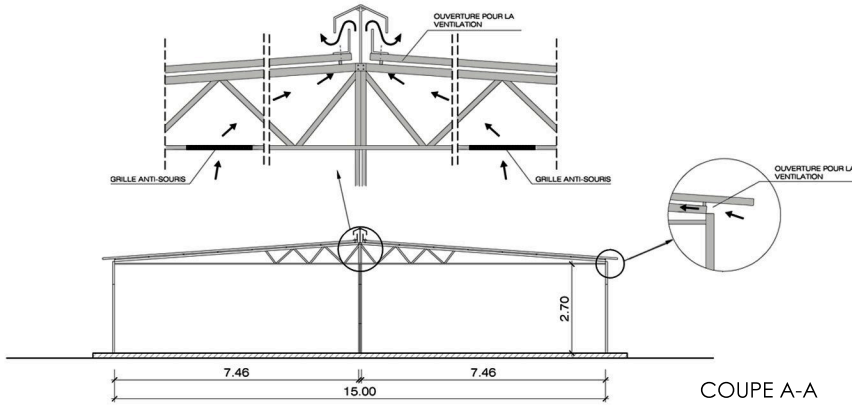
COMMETTANT: DE.RI.ME. S.r.l.

ANNÉE: 1999

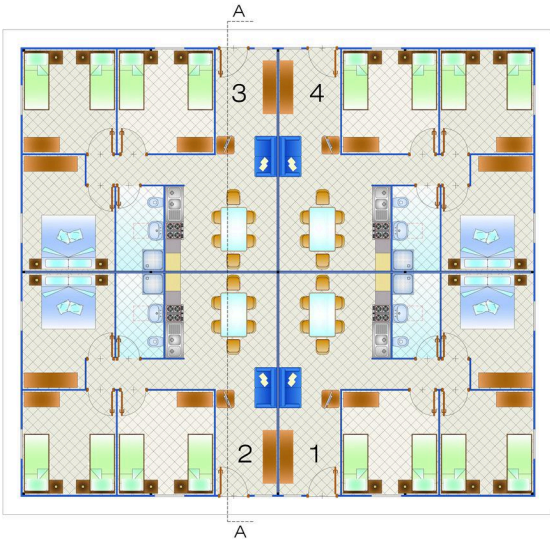
LIEU: PAYS DE L'AFRIQUE FRANCOPHONE

DESCRIPTION: TYPOLOGIE DE LOGEMENTS DE 38 m², 66 m², 85 m²

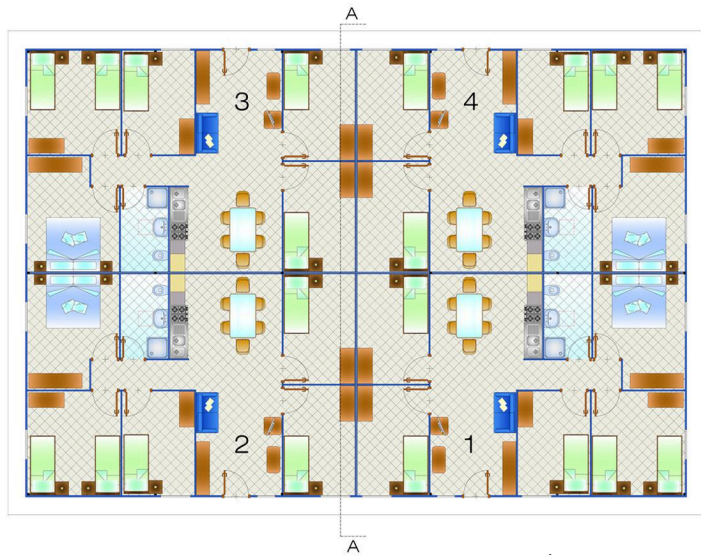
SERVICES OFFERTS: PROJECT MANAGEMENT DU SERVICES DE CONCEPTION POUR ÉTUDE DES MODULES HABITATIVES



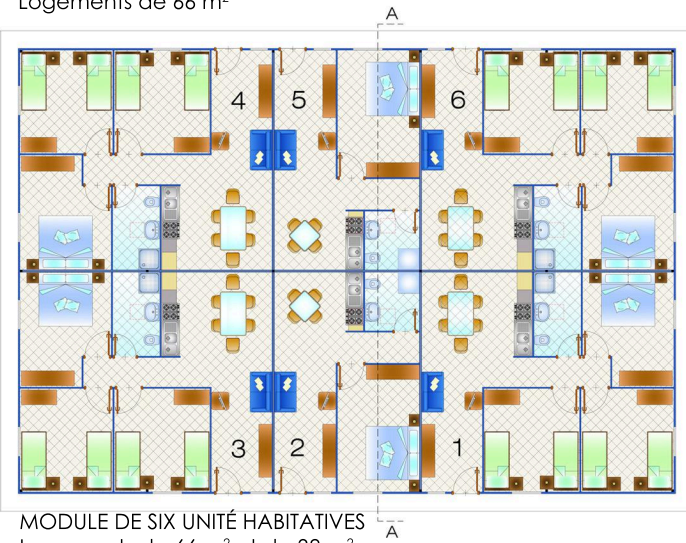
COUPE A-A



MODULE DE QUATRE UNITÉ HABITATIVES
Logements de 66 m²



MODULE DE QUATRE UNITÉ HABITATIVES
Logements de 85 m²



MODULE DE SIX UNITÉ HABITATIVES
Logements de 66 m² et de 38 m²



FAÇADE LATÉRALE



FAÇADE PRINCIPALE