

CLIENT: GEOBAU GmbH

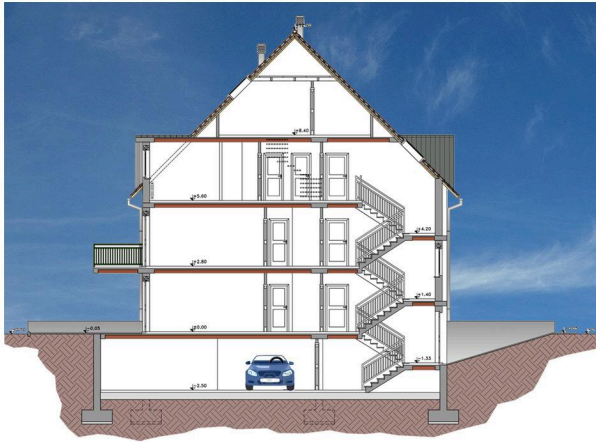
PERIOD: 1997

LOCATION: WEISSBACH, KREIS ZWICKAU (GERMANY)

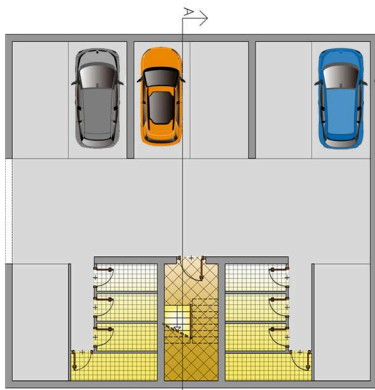
DESCRIPTION 12,820 m²

WORK VALUE: € 8,691,961

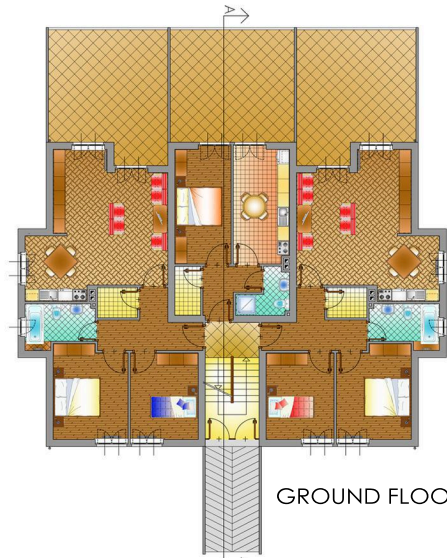
SERVICES PROVIDED: PROJECT MANAGEMENT FOR DESIGN SERVICES FOR FEASIBILITY STUDY



SECTION A-A



BASEMENT FLOOR PLAN



GROUND FLOOR PLAN



FIRST FLOOR PLAN



SECOND FLOOR PLAN



MAIN FACADE



REAR FACADE