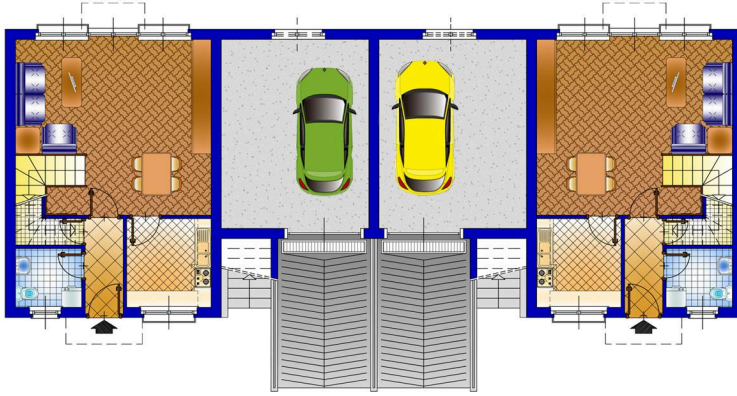
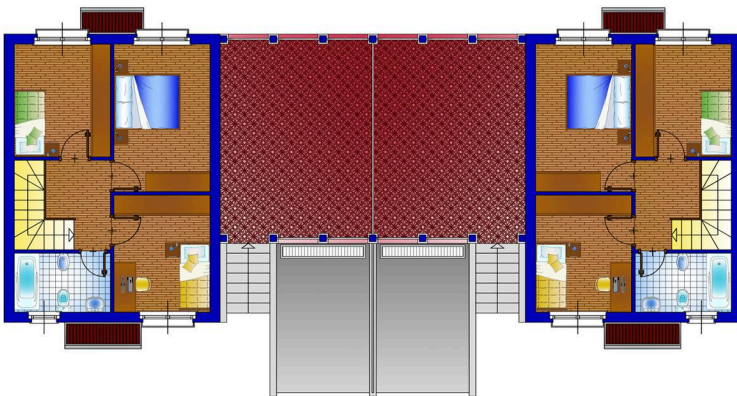


CLIENT: GEOBAU GmbH
 PERIOD: 1997
 LOCATION: SIEBENLEHN (GERMANY)
 DESCRIPTION: 84,000 m²
 WORK VALUE: € 57,980,500
 SERVICES PROVIDED: PROJECT MANAGEMENT FOR DESIGN SERVICES FOR FEASIBILITY STUDY

HOUSE MODEL MEASURING 85 m²



BASEMENT/GROUND FLOOR PLAN



FIRST FLOOR PLAN



MAIN FACADE



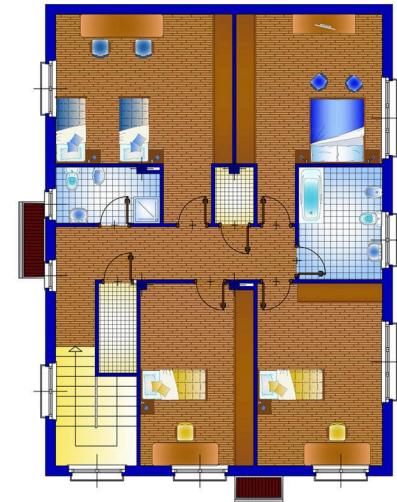
REAR FACADE



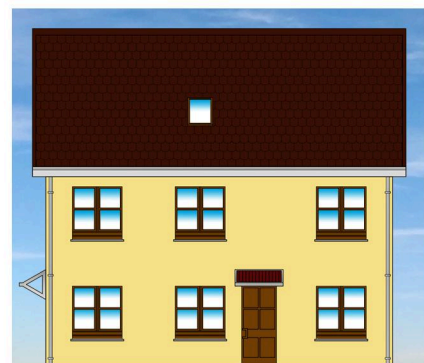
HOUSE MODEL MEASURING 238 m²



GROUND FLOOR PLAN



FIRST FLOOR PLAN



MAIN FACADE