

COMMETTANT: PRIVÉ

ANNÉE: 1996

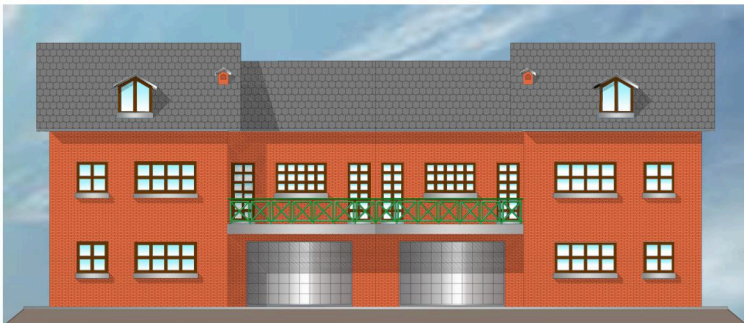
LIEU: HAMBOURG (ALLEMAGNE)

DESCRIPTION: 11,000 m²

MONTANT DES TRAVAUX: Mil. DM 12,100

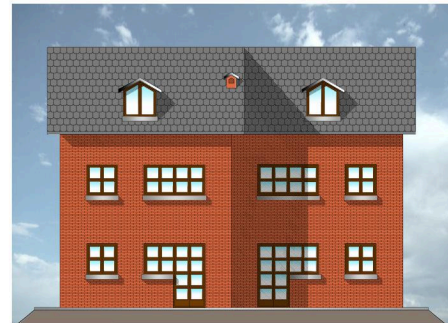
SERVICES OFFERTS: PROJECT MANAGEMENT DU SERVICES DE CONCEPTION POUR ÉTUDE DE FAISABILITÉ

LOGEMENTS DE 120 m²

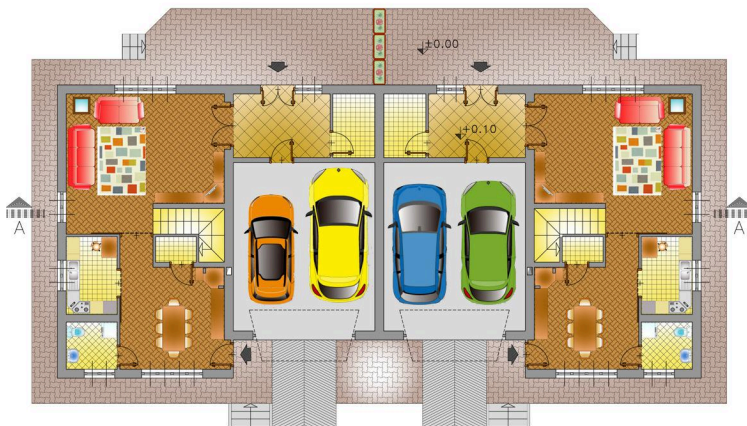


FAÇADE PRINCIPALE

LOGEMENTS DE 60 m²



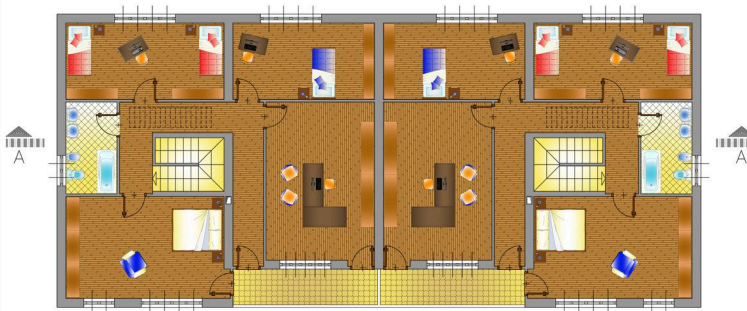
FAÇADE PRINCIPALE



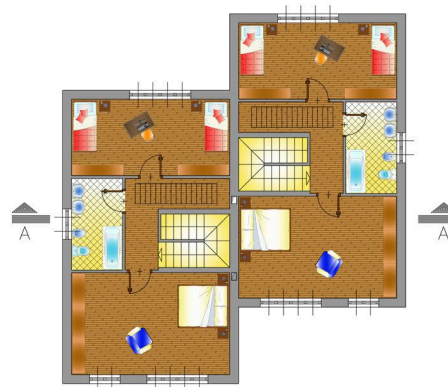
PLAN REZ DE CHAUSÉE



PLAN REZ DE CHAUSÉE



PLAN DU 1^{ER} ÉTAGE



PLAN DU 1^{ER} ÉTAGE



COUPE A-A



COUPE A-A

