

CLIENT PSSC (POLO SANITARIO SARDEGNA CENTRALE) - NUORO PERIOD: 2009-2013  
 FUNDED BY: BANCA INFRASTRUTTURE INNOVAZIONE E SVILUPPO (MILAN)  
 LOCATION: NUORO, SORGONO (NUORO), MACOMER (NUORO), SINISCOLA (NUORO) (ITALY)  
 DESCRIPTION: 80,675 m<sup>2</sup>  
 WORK VALUE: € 66,294,818  
 SERVICES PROVIDED: TECHNICAL EVALUATION



HOSPITAL "SAN CAMILLO" - SORGONO



CONTROL OF THE BANKABILITY - ANALYSIS OF TECHNICAL-DESIGN, CONSTRUCTION AND MANAGEMENT RISKS FOR THE RENOVATION AND THE COMPLETION OF HOSPITALS AND HEALTH DISTRICTS IN NUORO

DUE DILIGENCE



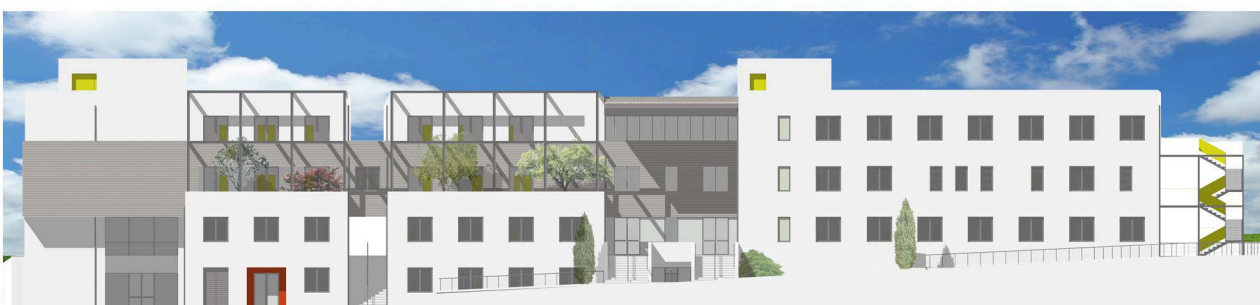
DISTRICT HEALTH CENTRE IN MACOMER



HOSPITAL "SAN FRANCESCO" - NUORO



HOSPITAL "CESARE ZONCHELLO" - NUORO



DISTRICT HEALTH CENTRE IN SINISCOLA