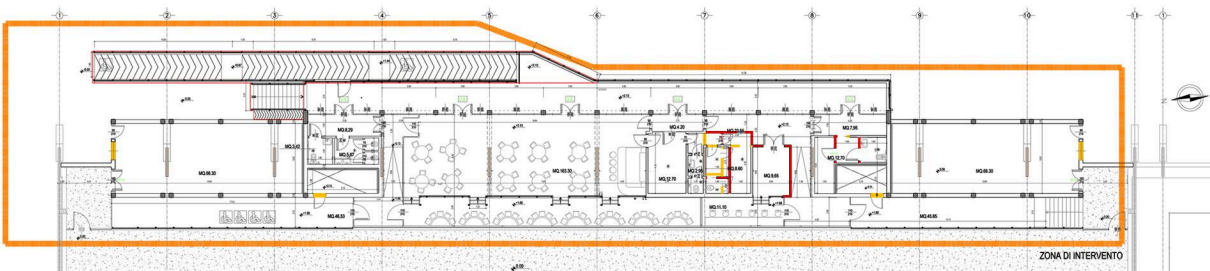
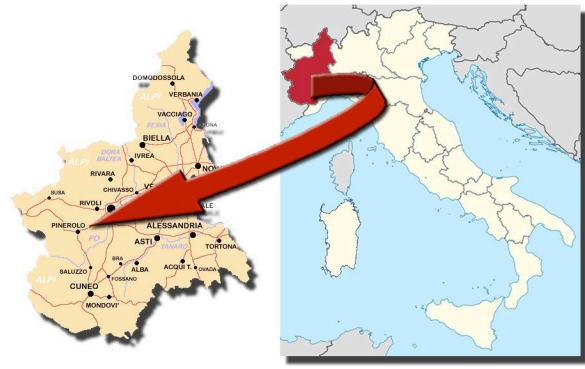


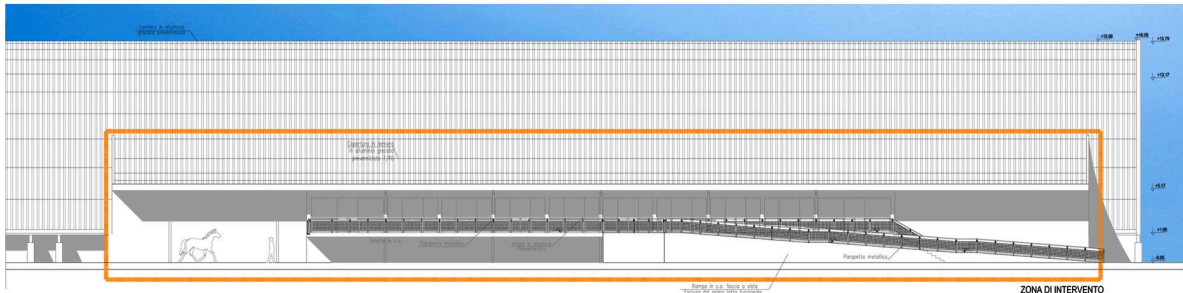
CLIENT: PRIVATE  
 PERIOD: 2011  
 LOCATION: PINEROLO (TURIN) (ITALY)  
 DESCRIPTION: 14,000 m<sup>2</sup> (INCLUDING EXTERNAL ARRANGEMENTS)  
 WORK VALUE: € 3,187,186  
 SERVICES PROVIDED: TECHNICAL EVALUATION



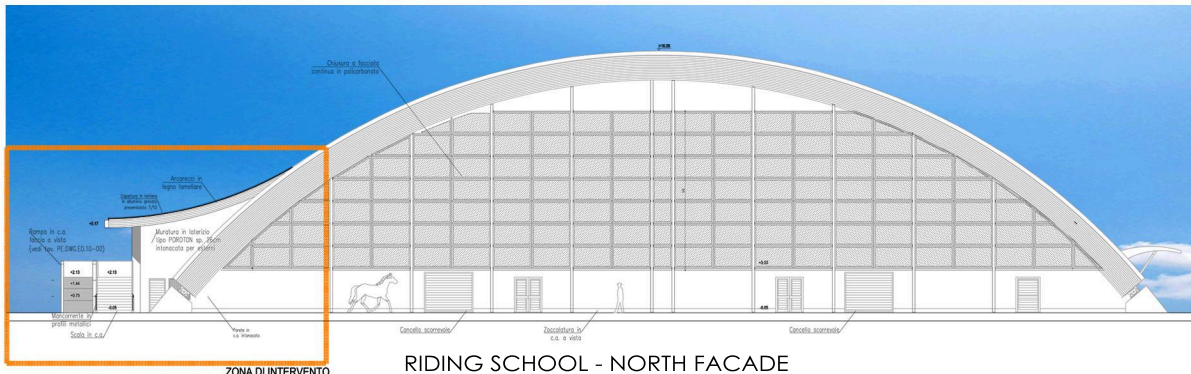
GENERAL PLAN



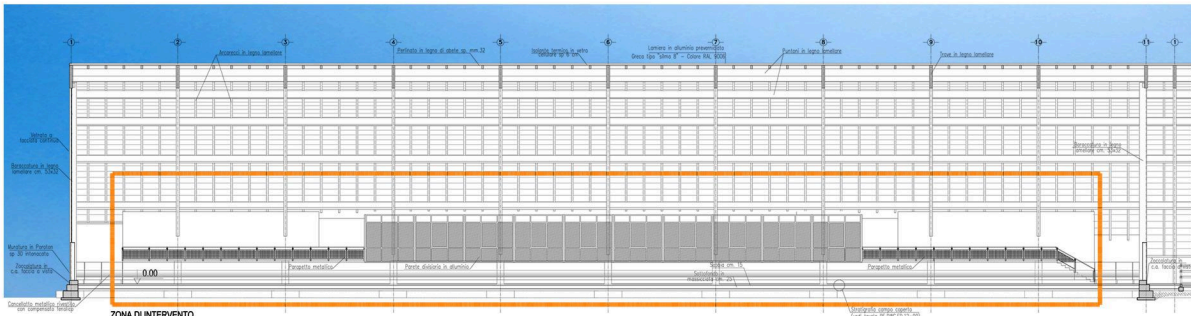
RIDING SCHOOL - GROUND FLOOR PLAN



RIDING SCHOOL - EAST FACADE



RIDING SCHOOL - NORTH FACADE



RIDING SCHOOL - SECTION A-A'

VALIDATION OF THE FINAL DESIGN DOCUMENTATION FOR THE REALIZATION OF THE 2ND LOT  
 OF THE NATIONAL FEDERAL HORSEBACK RIDING SCHOOL IN PINEROLO  
 DUE DILIGENCE