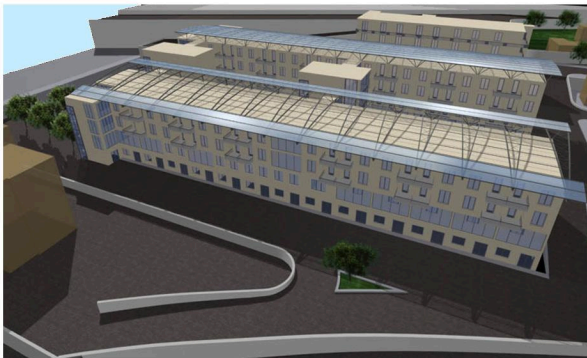
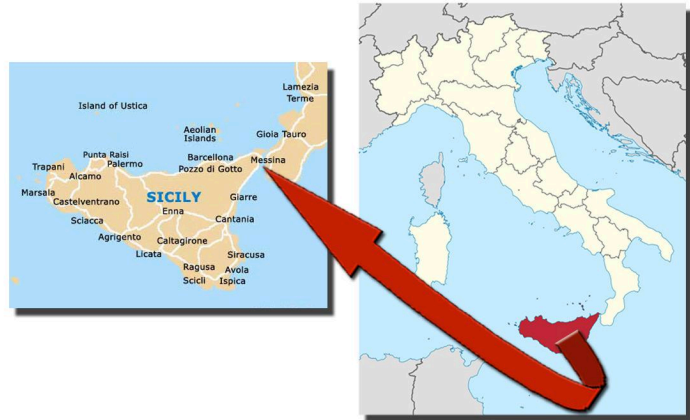


CLIENTE: TECNIS - CATANIA ANNO: 2006
 FINANZIATORE: UNICREDIT INFRASTRUTTURE
 LUOGO: MESSINA
 DATI TECNICI: 52.232 m²
 IMPORTO LAVORI: € 47.463.186
 SERVIZI PRESTATI: VALUTAZIONE TECNICA

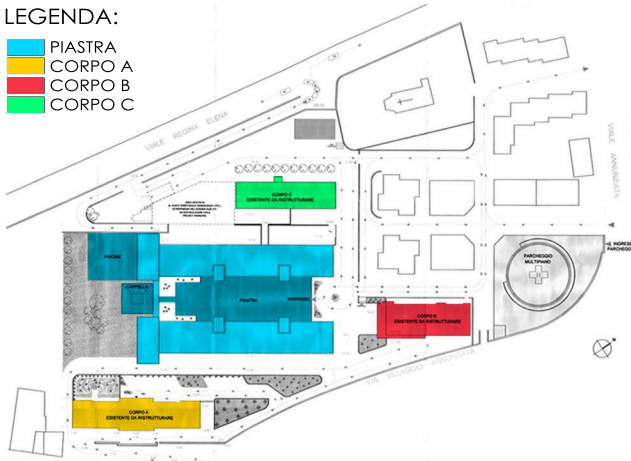


VISTA DEL COMPLESSO (RENDER)

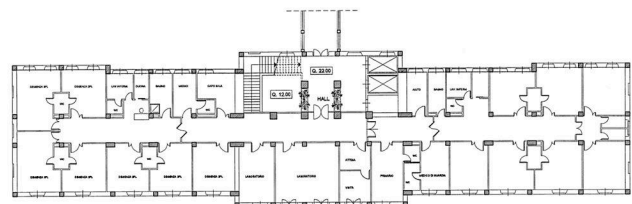


LEGENDA:

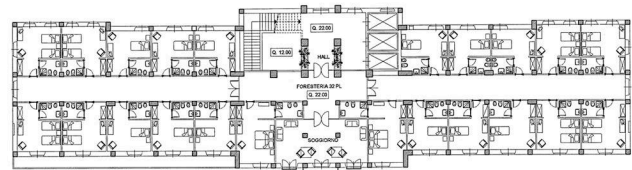
- PIASTRA
- CORPO A
- CORPO B
- CORPO C



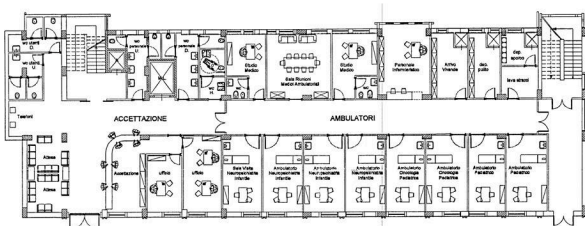
PLANIMETRIA GENERALE



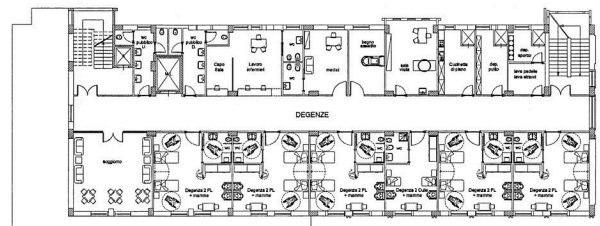
CORPO A - PIANTE PIANO SECONDO - STATO DI FATTO



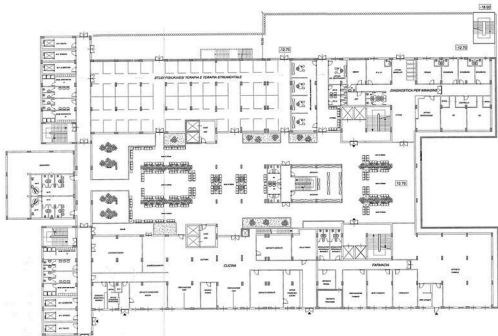
CORPO A - PIANTE PIANO SECONDO - PROGETTO



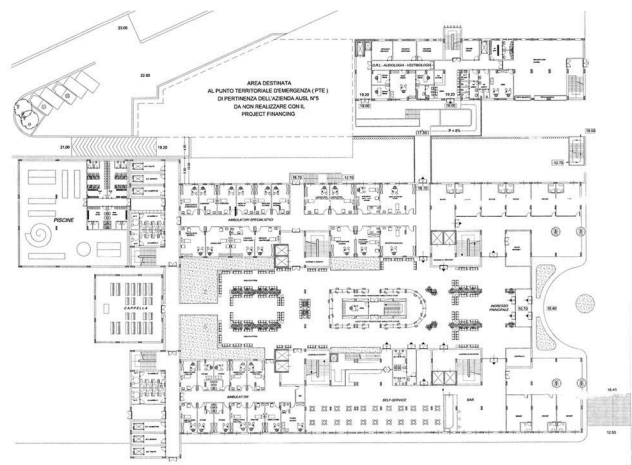
CORPO B - PIANTE PIANO TERRENO



CORPO B - PIANTE PIANO QUARTO



PIASTRA - PIANTE PIANO TERRENO



PIASTRA E CORPO C - PIANTE PIANO PRIMO



RICONVERSIONE IN STRUTTURA RIABILITATIVA DELL'OSPEDALE REGINA MARGHERITA DI MESSINA:
 DUE DILIGENCE TECNICHE SUL PROGETTO, MONITORAGGIO DI COSTRUZIONE, COLLAUDO E GESTIONE

DUE DILIGENCE