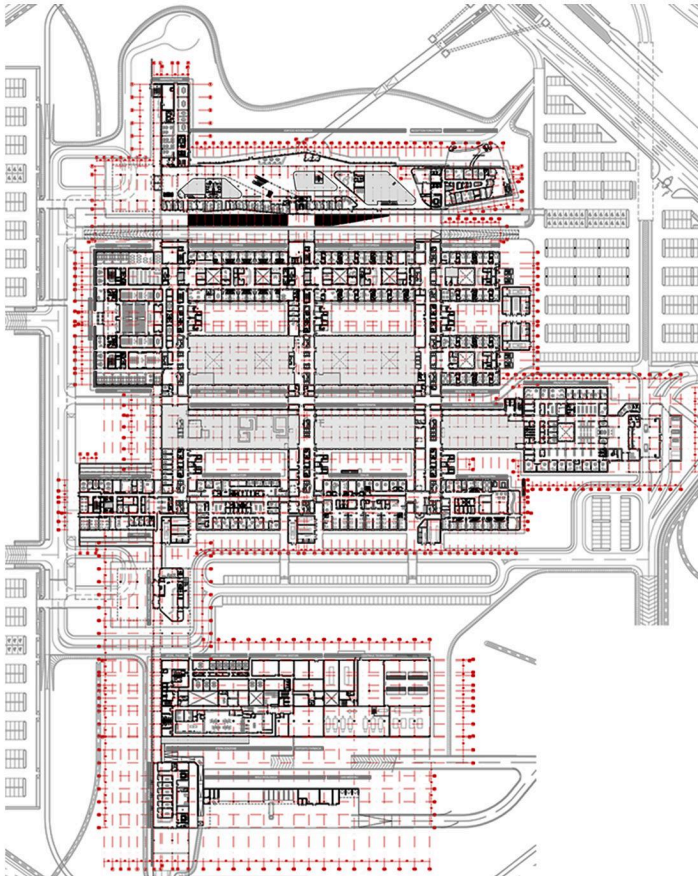
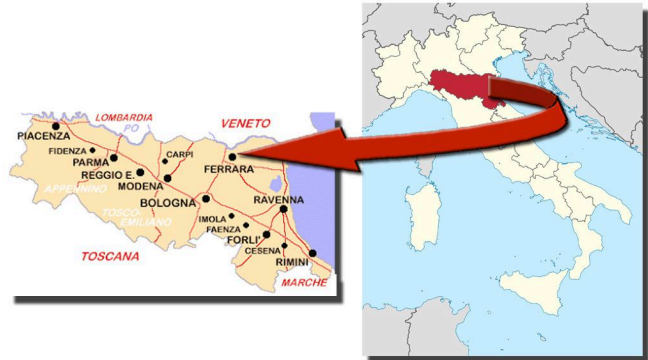


CLIENT: PROG.ESTE - CARPI PERIOD: 2006
 FUNDED BY: UNICREDIT INFRASTRUTTURE
 LOCATION: FERRARA (ITALY)
 DESCRIPTION: 517,265 m²
 WORK VALUE: € 166,457,006
 SERVICES PROVIDED: TECHNICAL EVALUATION



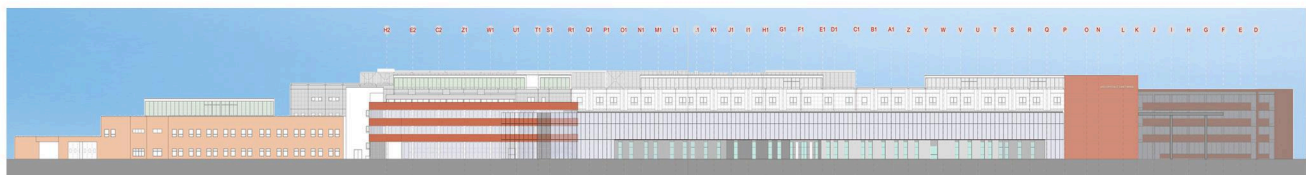
VIEW OF THE HOSPITAL



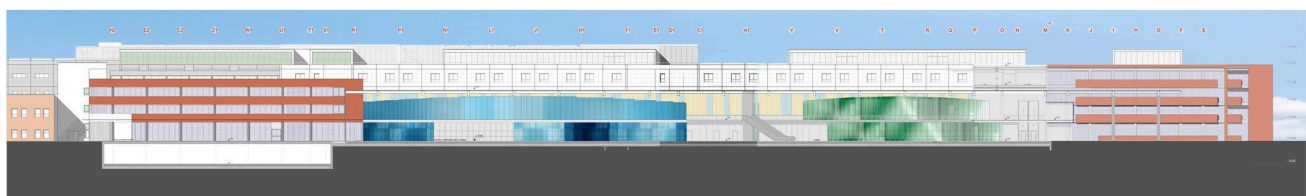
GENERAL PLAN



UNDER CONSTRUCTION



NORTH-WEST FACADE



SECTION P-P

TECHNICAL DUE DILIGENCE ON THE DESIGN, RISK ANALYSIS AND RELATED MITIGATION TOOLS
 FOR THE COMPLETION OF THE NEW ARCSIPEDALE S. ANNA IN CONA UNIT IN FERRARA

DUE DILIGENCE