

CLIENT: DOMOPAN FZE

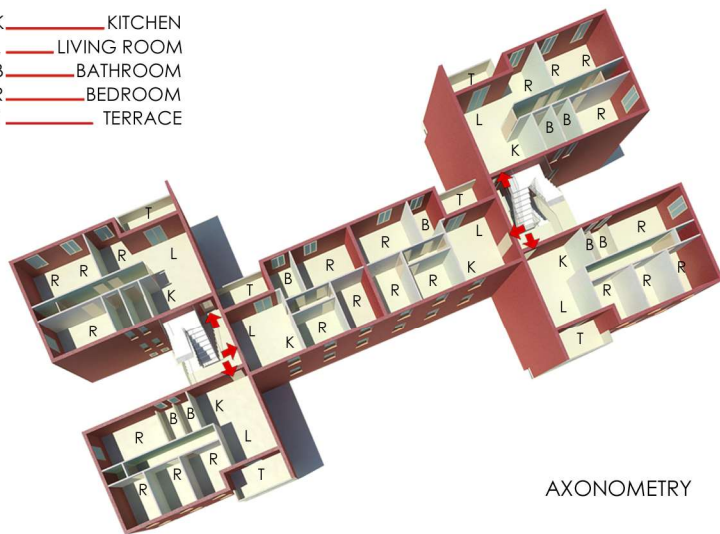
PERIOD: 2013

LOCATION: DAKAR (SENEGAL)

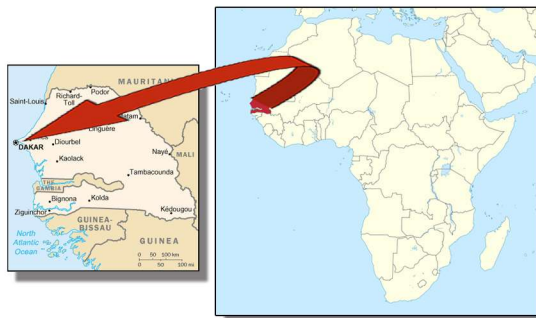
DESCRIPTION: 1,150,000 m² - 10.000 SOCIAL ACCOMMODATIONS IN MULTI-STOREY BUILDINGS

SERVICES PROVIDED: PROJECT MANAGEMENT, PRELIMINARY ARCHITECTURAL DESIGN

- K — KITCHEN
- L — LIVING ROOM
- B — BATHROOM
- R — BEDROOM
- T — TERRACE



AXONOMETRY



PLAN OF "H" BUILDING,
COMPOSED OF TWO BASE MODULES
LOGEMENT FORESEEN IN THE BASE
MODULE OF THE "H" BUILDING:

65 m² Logement:

n° 1 double bedroom (12 m²),
n° 2 single bedroom (8 m²),
living room, kitchen, n° 1 bathroom.

85 m² Logement:

n° 1 bedroom (12 m²),
n° 3 single bedroom (8 m²),
living room, kitchen, n° 2 bathrooms.



TYPE FLOOR PLAN

65 m ² LOGEMENT	
Floor Area	55,6 m ²
Gross surface area	65,2 m ²
Terraces/balconies	7,2 m ²
85 m ² LOGEMENT	
Floor Area	73,8 m ²
Gross surface area	86,7 m ²
Terraces/balconies	8,4 m ²
"H" BUILDING	
Landings and stairs (common rooms)	
Basement floor	50,8 m ²
Mezzanine	23,9 m ²
First floor	20,6 m ²
Second floor	20,6 m ²
Third floor	10,9 m ²
Basement floor (common rooms)	24,42 m ²
TOTAL	124,8 m²
GROSS SURFACE AREA including terraces, landings and stairs	
Basement floor	207,9 m ²
Mezzanine	290,5 m ²
First floor	287,2 m ²
Second floor	287,2 m ²
Third floor	287,2 m ²
TOTAL	1.360 m²



LATERAL FACADE



INTERNAL FACADE